

Jewelbeetle

manufacturing jewellers and designers

First floor, 240 Trafalgar St, Nelson, New Zealand. Tel 0064 (0)3 548 0487

Your rings for your day - and every day after

Your wedding rings are a representation of your love and will be one of the most symbolic purchases you will ever make. They remain the only physical memory of your wedding day that you carry with you throughout your life.

So why buy something mass produced?

With this in mind it is always surprising how so many couples leave choosing their rings to the last minute. It really is worth giving your rings some special thought and having them custom made means you can have some input into their design. Not only is the process fun, but in the end you have a design that is unique and with special meaning to you.

There are some considerations to take into account when you are designing your rings. Firstly it is important to consider your lifestyle and try to choose accordingly. For example, if you work with your hands then it would be advisable not to choose any intricate patterns or high stone settings that could easily get caught or damaged. Also, certain metals are tougher and more durable, and it is a common misconception that 9ct is more hardwearing than 18ct.

Although a plain gold band is a traditional option, there are numerous metals to choose from to suit every budget these days. A word of advice would be not to get too eccentric with your design ideas - what you might think is great today, might not be what you'll like in 20 years time! On the other hand, by then you could always re-new your vows and have new wedding rings made!



Brief history of the wedding ring

Did you know the wearing of wedding rings on the third finger of the left hand dates back to the 17th Century BC? Ancient Egyptians believed that this finger contained the "vena amoris", the vein of love that runs directly to the heart. By placing a continuous band of precious metal on this finger, it was thought that you ensured your everlasting love.

Choosing your wedding rings

There are many things to consider when choosing your wedding rings. It's important that it matches and sits comfortably next to your engagement ring. Many people choose to combine both rings into one design. Or design the engagement ring and wedding ring at the same time.

What materials can be used?

Metals for your ring: gold, silver, platinum or even titanium. See our guide to metals below to compare.



Our guide to precious metals

The gold myth

In New Zealand, there is a choice between 9,14 and 18 carat (ct) gold. It is a common misconception that 9ct gold is harder wearing than 14 or 18ct gold. 9ct has a Vickers hardness of 120 and 18ct has a Vickers hardness of 125. While this shows that 18ct is harder, in practical terms 9ct and 18ct are much the same. 9ct is however, more difficult to bend and is a little springier than 18ct. Therefore a thin 9ct ring may be less likely to bend out of shape than a thin 18ct ring. This is why a lot of the lightweight and cheap jewellery is manufactured in 9ct gold. However, if your jewellery is of good sturdy construction, neither metal will be likely to bend out of shape. The gold content in 9ct gold is very little, it has more parts copper and silver than actual gold. See the table below to see a typical gold alloy recipe.

CARAT	PURE GOLD	SILVER	COPPER	ZINC	NICKEL
9ct	37.5%	12.1%	44.4%	6%	nil
18ct	75%	16%	9%	nil	nil

The colour of gold

The difference in colour between yellow, white and rose gold is determined by the metals used in the alloy mix. The colour of any gold alloy will not chip, fade or wear off with age.

Yellow gold

Yellow Gold is an alloy of pure gold with metals such as copper and zinc. In yellow gold the copper content determines the colour of the alloy. For instance, 24ct is pure gold, whereas 18ct gold has 18 parts of pure gold and 6 parts of copper and zinc; therefore 9ct gold only has 9 parts pure gold content and the rest (15 parts) copper and zinc.

Rose gold

Rose gold has a higher copper content than yellow gold, giving it a rose-reddish colour.

White gold

White gold is an alloy of pure gold and white metals such as silver and palladium. Often, white gold jewellery is plated with Rhodium.

Silver

Silver is quite soft and not as durable as other metals, the advantage however, is the price, when compared to gold, platinum etc. Silver will tarnish, requiring regular cleaning. Some people may experience skin reactions to silver.

Rhodium

Rhodium has similar properties to platinum. It is used predominately for plating, (mainly white gold jewellery). The natural colour of white gold is actually a light grey but rhodium plating gives the gold a whiter and brighter appearance. Rhodium plate is only a thin surface coating and will wear off eventually, however it can be re-applied in most cases.

Platinum

Platinum is a white metal, but unlike gold it is used in jewellery in almost its pure form (approximately 95% pure). Platinum is extremely durable, and retains it's brightness, so it does not need to be rhodium plated. Platinum is very dense metal, so a platinum ring will feel heavier than an 18ct gold ring. Platinum is, however, significantly more expensive than gold. As a rough guide, a platinum ring will be approximately twice the price of an 18ct white gold ring.

Palladium

Palladium is a relatively new metal to the NZ jeweller but it has been used in Jewellery worldwide since 1939. It's natural colour properties mean that it doesn't need any plating to enhance its white appearance. It has been used as an alloy for making white gold for many years. As a PGM (a platinum group metal) it is a great alternative to white gold and with a lighter specific weight than platinum - it is an affordable option.

Titanium

Titanium is a natural element, which has a silver-greyish colour. Titanium is the hardest natural metal in the world and yet is very lightweight. Pure titanium is also 100% hypoallergenic, which means that it is safe for anyone to wear, and will not cause skin reactions. Titanium is very strong, giving it more dent, bend and scratch resistance than gold, silver and platinum. **One factor to consider with titanium is that it cannot be soldered. This limits the design of your jewellery and also means that titanium rings cannot normally be resized.**

Design Considerations

Do you have an active lifestyle?

We have a wide range of standard ring models for you to try on in different widths and textures. You might want to consider a ring that has a smooth and rounded profile to allow it to slide off easily, avoiding injury.

How can I afford the ring I really want?

If you are restricted in your budget we can advise you on several options to help save you money. If you have your heart set on a diamond ring but your budget doesn't stretch we can set it with a cubic zirconia. (A clear semi precious alternative.) Most settings can be re-set with a diamond at a later stage which allows you some time to save for one.

How long does it take?

We usually recommend four weeks to manufacture your rings. This allows adequate time for any adjustments required. We are happy to talk over any ideas you may have at any stage in your wedding plans. We also offer a free quote and design consultation. Come and see us!



The Design Process

A bespoke “Jewel Beetle” piece starts on a special journey from its concept to completion. Along the way, we listen to your thoughts and ideas, stirring them into a melting pot together with our design style and professional expertise to create a finished piece that is profoundly individual.

Whether you've already got an idea or no idea at all, we're here to help you through the design process. At Jewel beetle, we've developed a talent to clearly interpret just what you've been thinking of.



Step 1

Ignite your imagination by browsing through our extensive photo album of past designs and commissions. We're sure you will find them inspirational and we can give you an idea of what something similar may cost.

Let us know your budget as this determines what is possible and what alternatives or other options are available to you.

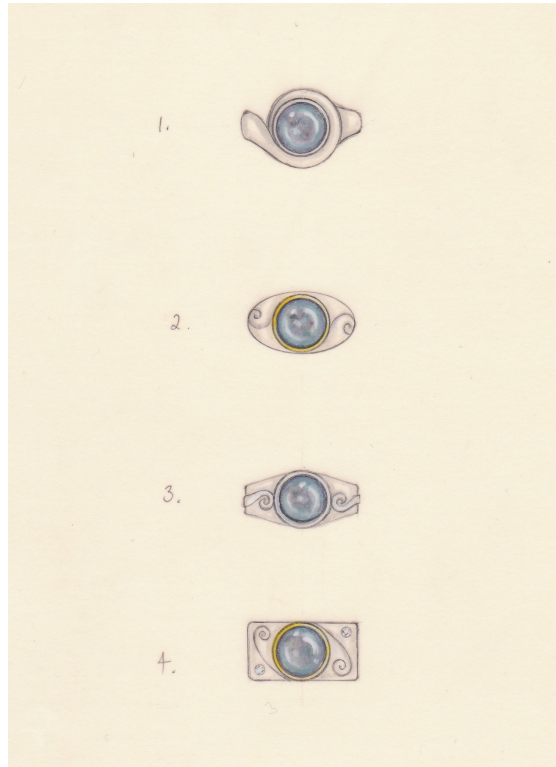
Step 2

Your commission starts with a consultation with one of our designers. This can happen on the phone (if you live too far away) or face to face at our Nelson studio. Although it is great to be able to meet you in person location really isn't a problem, and many of our customers have been equally satisfied with conversing over the phone and exchanging ideas by email.

During your consultation we will discuss your style, what clothes you wear, what jewellery you currently like wearing and colours you prefer - this is our chance to start to create a picture and the perfect design for you. If you come with a very clear idea for your commission, we will use our expertise to make this a reality for you. And possibly advise you on some options you may not have thought of.

Step 3

If it's appropriate we may do a series of hand drawn sketches either during or after the appointment to clarify the ideas discussed. See example below.



If you find drawings hard to visualise, on some occasions, we can often make a scaled 3-D wax model.

Once you have decided on a design and are happy with the quote given, we ask for a 50% deposit to confirm the order. Then the commission begins!

Step 4

If your commission involves gemstones, we will source them from our suppliers.

Every gem is of course different, and if the stone is a main feature in the design we can often get some gemstones on approval for you to choose.

We take your ring size and then the manufacturing process begins!

At Jewel Beetle, we work together as a team and utilise each other's strengths and technical skills. Together we can create the rings you deserve and that truly reflect your personality and the relationship they represent. You can be assured of the highest quality of workmanship.

When your rings are ready, you can come in and try them on for size or we are very happy to send it to you by courier (special insurance cover may apply)

We hope we can add you to our list of delighted customers, all of whom have discovered the real benefits of individual design and the delights of a unique handcrafted wedding ring.

What our customers say. . . .

Allison and Yvon--

"Kathryn and I want to thank you for your beautiful work on our wedding rings. We have them hidden pending our wedding but take them out from time to time to admire them. We look forward to wearing them permanently in October and fondly appreciate your advice, professionalism, promptness, and artistry in creating our rings."

Sincerely,

Stan Biderman and Kathryn Minette Santa Fe, NM

"Julie and I chose to seek out a manufacturing jeweller who would manufacture our wedding rings to a style and standard that we determined must result in them being very special to us. We are very delighted with the rings and we expect we shall receive many favourable comments about our choice in their style. Murray did work as a watchmaker for a number of years and worked alongside two very skilled & experienced manufacturing jewellers, it is from this experience of some 25 years ago, that the personal crafting skills of jewellery manufacture are known to be very evident in the finished pieces when compared with off the shelf bulk manufactured items."

Murray brown – Blenheim

"After searching for a wedding band I decided to get Jewel Beetle to make it as they had created a beautiful ring for my then fiance and now wife. As I am based in Wellington I sent Allison an email describing what I wanted and she emailed me back with the design. Allison made creating my wedding band an easy and enjoyable process."

Matthew Flanagan - Wellington

